



Nov
2024

Director's Report

Hello UNA/UBC/UEL neighbours,

To begin, I want to express my sadness at the recent loss of an incredible Canadian, the Honorable Senator Murray Sinclair. He was best known for his role as the Chief Commissioner of the Truth and Reconciliation Commission of Canada (TRC). In that role, he participated in hundreds of hearings across Canada; oversaw a multi-million-dollar fundraising program to support events, activities, and allow survivors to travel to attend events; and helped produce the final report in 2015. In 2020, I was fortunate to hear Senator Sinclair speak, and was deeply moved by his wisdom, and the clarity with which he outlined what we as Canadians need to do to meaningfully move forward with reconciliation. My condolences to his family and all who knew him. He was a great man.

This past month saw the Metro Vancouver Board pass its 2025 budget. You can read a summary below and find out more in the links provided. At an even more local level, voting is now open in the UNA Board election. Please learn about the candidates running and take the time to vote. Thank you to Board Chair Richard Watson and the outgoing Board for their years of dedication and hard work for our community.

As always, please reach out if you have any questions, suggestions or concerns that I may be able to assist with.

All the best,

Jen McCutcheon

Jen McCutcheon, Metro Vancouver Director for Electoral Area A (www.areaajen.ca or areaajen@gmail.com)

Metro Vancouver 2025 Budget Passed

At our November 1st Metro Vancouver Regional District (MVRD) Board meetings, the Board passed the 2025 regional district budget. The new budget will result in an \$875 average annual cost per household for all Metro Vancouver services, including fresh drinking water, liquid waste, solid waste management, regional parks, supportive housing, Electoral Area services, air quality policies and monitoring, and much more. This budget is a 9.9%, or \$79 increase (on average) per household over the 2024 budget (Water: \$11, Liquid Waste: \$63, Solid Waste: \$3, MVRD: \$2)

OVERALL AVERAGE HOUSEHOLD IMPACT 2025–2029

	2024	NSWWTP Amended	2025	2026	2027	2028	2029
Water Services	\$189	\$189	\$200	\$211	\$215	\$218	\$218
Liquid Waste Services	\$349	\$447	\$510	\$549	\$587	\$627	\$672
Solid Waste Services	\$68	\$68	\$71	\$74	\$78	\$82	\$86
Regional District Services	\$92	\$92	\$94	\$84	\$85	\$86	\$87
Total Household Impact	\$698	\$796	\$875	\$918	\$965	\$1,013	\$1,063
Prior Year Forecast - amended			\$884	\$933	\$981	\$1,033	

For more information on the Budget, you can watch this video: <https://www.youtube.com/watch?v=vJ4oBOAx0t4>.



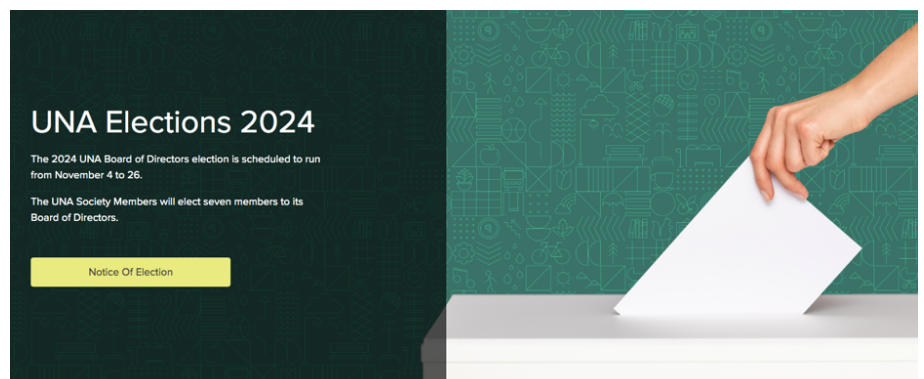
UNA Board Elections Happening this November

From November 4 to 26, 2024, residents within the University Neighbours Association (UNA) will elect their new Board. Residents need to be a UNA Society Member to run for a position on the board, or to vote in the election. More information on how to become a member can be found here: myuna.ca/society.

I would like to take this opportunity to thank Board Chair, Richard Watson, and the outgoing Board for their years of service. I know that they have each dedicated significant time, energy and expertise to our community. Thank you also to those who have put their name forward to run in the current election.

Here are some important dates related to the election:

- **November 4:** Voting period began
- **November 14:** All-Candidates Forum
- **November 22:** Deadline to register as a UNA Society Member and be eligible to vote
- **November 26:** Voting period ends; ballot counting; announcement of election results



I encourage you to take the time to learn more about each candidate [here](#). Good luck candidates and thank you for stepping up to serve our community.

For more information, please visit myuna.ca/elections.

Climate Action Dialogues: Human Health and Wellbeing

Join Metro Vancouver for the next Climate Action Dialogue on Human Health and Wellbeing in November 2024, where we'll explore the outcomes for health and wellbeing when we take action on climate. Panelists will discuss extreme weather and public health, and the role of proactive climate action—like urban green spaces, better building designs, and robust emergency systems—in lowering these risks. The dialogue will also highlight innovative solutions in urban planning, housing, and local government efforts that improve quality of life, promote equity, and support economic growth through job creation and reduced healthcare costs.

Join experts, engage in interactive Q&A sessions, and network as we explore the outcomes of climate action and our own health and wellbeing. With limited seating for the in-person events, please register early to avoid disappointment. Doors open 30 minutes before and after the program for networking and refreshments.



In-person session in Vancouver: Tuesday, November 26 | 9:00 am to 10:15 am (doors open at 8:30 am; optional 30-minute networking session to follow)

SFU Morris J. Wosk Centre for Dialogue – ICBC Salons

580 W Hastings St, Vancouver, BC

[Register here for the Vancouver session](#)

Webinar session: Thursday, November 28 | Noon to 1:15 pm Pacific Time (US and Canada)

[Register here for the webinar session](#)

Metro Vancouver launched the Climate Action Dialogue series in spring 2023. Dialogues in this series include economic opportunity and policy drivers, decarbonizing buildings, lowering emissions from transportation, and the impact of land use decisions on climate goals. [Learn more about the Climate Action Dialogues.](#)



Silent Trails being Piloted in Pacific Spirit and other Regional Parks

Silent Trails is a research project spearheaded by the University of BC that involves a pilot in two regional parks: [Pacific Spirit](#) and [Campbell Valley](#).

Portions of two trails have been temporarily designated as “silent trails” where park visitors are encouraged to speak more quietly and notice the sounds of nature, such as wind in the trees, rain on leaves, and bird song.



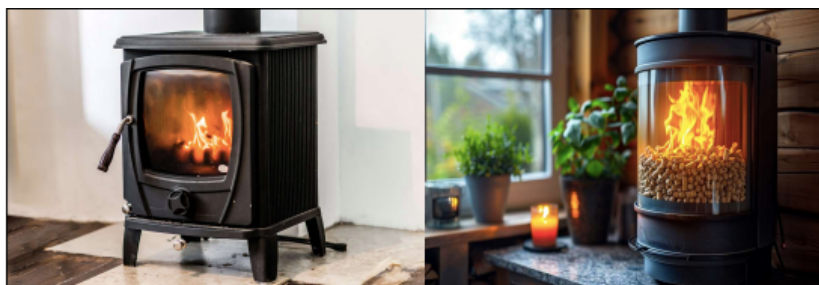
Studies show that connecting to nature can improve mental and physical health. Quieter trails also benefit wildlife and protect the natural soundscape of the park.

To experience a silent trail yourself, visit Top Trail (between Imperial Drive and Huckleberry Trail) in Pacific Spirit Regional Park or Ravine Trail (south entrance near the nature house) at Campbell Valley Regional Park.

For more information on the project, including a survey to take after exploring the trail, please go to the [Silent Trails webpage](#).



Registration of wood burning fireplaces and appliances



Residential Indoor Wood Burning Bylaw 1303

Wood smoke from residential indoor wood burning is the most significant source of emissions of fine particulate matter (PM_{2.5}) in the Metro Vancouver region, contributing more than a quarter of the total annual regional PM_{2.5} emissions, and is the second top source of toxic air pollutants. Exposure to wood smoke is of particular concern in densely populated urban areas, due to the proximity of a single smoking chimney to

multiple neighbours. Bylaw 1303 was adopted in 2020 after an extensive consultation process and review of the regulatory approaches taken in other jurisdictions. It is designed to reduce emissions of harmful air contaminants, and so reduce exposure and the known health impacts.

Bylaw 1303 applies to indoor wood burning appliances, e.g., wood stoves and fireplaces, in all residences within Metro Vancouver, with more stringent requirements in more densely populated areas (including UBC and UEL) to achieve emission reductions where they will have the greatest benefits for health protection. The continued implementation of requirements addresses emissions of the harmful air contaminants from residential indoor wood burning appliances by promoting the use of cleaner wood-burning practices and technologies, including the use of cleaner burning appliances and fuels.

The requirements to use Best Burning Practices (see image to the right) came into effect immediately on adoption of Bylaw 1303, strengthening measures that existed in the GVRD Air Quality Management Bylaw No. 1082, 2008. Subsequently, in May 2021 the seasonal prohibition came into effect, which prohibits the use of residential indoor wood burning appliances such as wood stoves and fireplaces, between May 15 and September 15 every year unless they are the sole source of heat in a home, in an off-grid rural home, or during an emergency.

Most recently, since September 2022, residents are required to declare that they use Best Burning Practices and to register eligible appliances that are located within the Urban Containment Boundary. Implementation will culminate in September 2025 with a prohibition on the use of unregistered appliances located within the Urban

How to Follow Best Burning Practices



Use only clean, seasoned wood



Don't let your fire smoulder



Don't burn garbage, plastic or treated wood



Inspect and maintain your appliance



Burn small + hot fires



No visible emissions except when starting a fire



Containment Boundary, with some exceptions for emergency use, and equity provisions to ensure that residents can heat their homes when necessary.

You can find out more about best burning practices and how to register your burning appliance (including fireplaces) here:

<https://metrovanancouver.org/services/environmental-regulation-enforcement/air-quality-regulatory-program/about-the-residential-indoor-wood-burning-bylaw>
<https://metrovanancouver.org/services/air-quality-climate-action/Documents/best-burning-practices-rack-card.pdf>

For more information go to
www.metrovanancouver.org and
 search 'residential wood burning'.



RIWB@metrovanancouver.org | 604-451-6677

Updates to Solid Waste Tipping Fees Approved for 2025

At the November 1st Metro Vancouver Board meeting, the Board approved a \$7 per tonne increase to the garbage tipping fees of, or between a 4.2% and 5.8% increase depending on the load weight, and a \$3 per tonne increase to the generator levy. The proposed 2025 garbage tipping fees increase of \$7 per tonne is equal to the projected tipping fee increase in the previous five-year financial plan. Other changes and proposed revisions are as described in the report located [HERE](#), starting on page 21.

These changes are effective January 1, 2025, and may impact waste removal fees from multifamily buildings.

Metro Vancouver Neighbourhood Built Environment and Walkability Surface Analysis

The Neighbourhood Built Environment and Walkability Surface analysis, including the Walkability Index, have been updated based on 2021 data. The Walkability Index supports the comparison of data from previous analyses from 2006, 2011, and 2016. This analysis enables Metro Vancouver and its members to better understand how the built environment and walkability currently varies across municipalities and neighbourhoods and how it is changing over time. This resource also supports land use and transportation decision-making. Greater walkability is associated with improved traffic flow, reduced air pollution and greenhouse gas emissions, improved physical and mental health outcomes, and greater community wellbeing. Monitoring walkability in the region supports Metro 2050 goals and policies, specifically the federation's collective goals regarding the development of resilient, healthy, connected and complete communities.

The key findings of the 2021 Walkability Index are:

- The most walkable areas in the region are aligned with Metro Vancouver's Urban Centres and Frequent Transit Development Areas (FTDAs), as set out in Metro 2050.
- Greater walkability is attributed mostly to increased net residential density and/or land use mix in Vancouver, Burnaby, New Westminster, the North Shore, western parts of Coquitlam, and northwestern parts of Surrey. In other areas, greater walkability is associated with increased intersection and/or net residential density.



- Walkability improved across the majority of Metro Vancouver from 2016 to 2021 – with more pronounced improvements in Urban Centres and FTDAs.

The report has a number of maps that you may be interested in reviewing. I have copied two here, showing the change in walkability from 2016 to 2021. You can read the full report [here](#), starting on page 41.

Figure 1. 2021 Walkability Index.

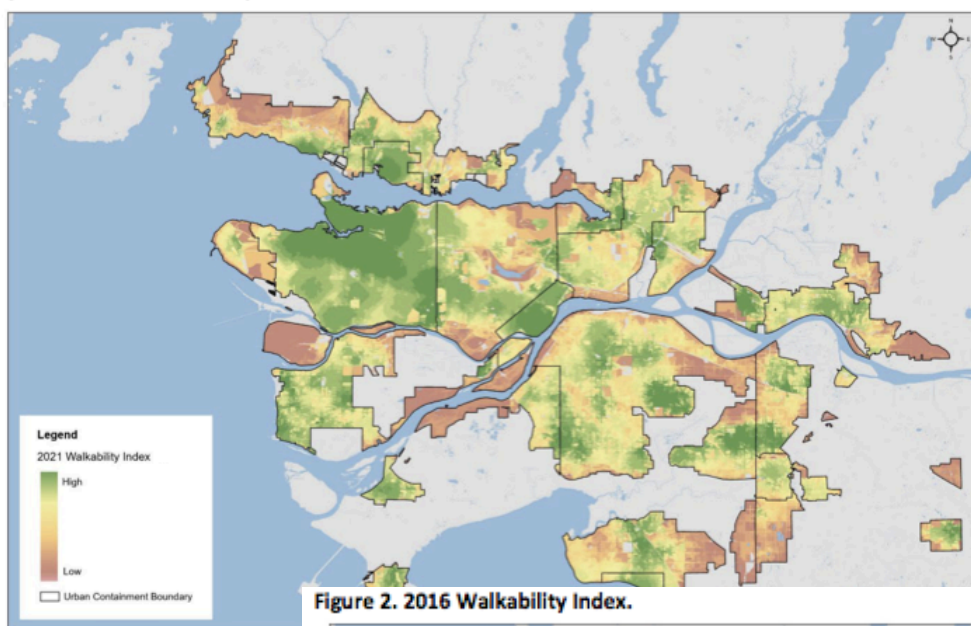
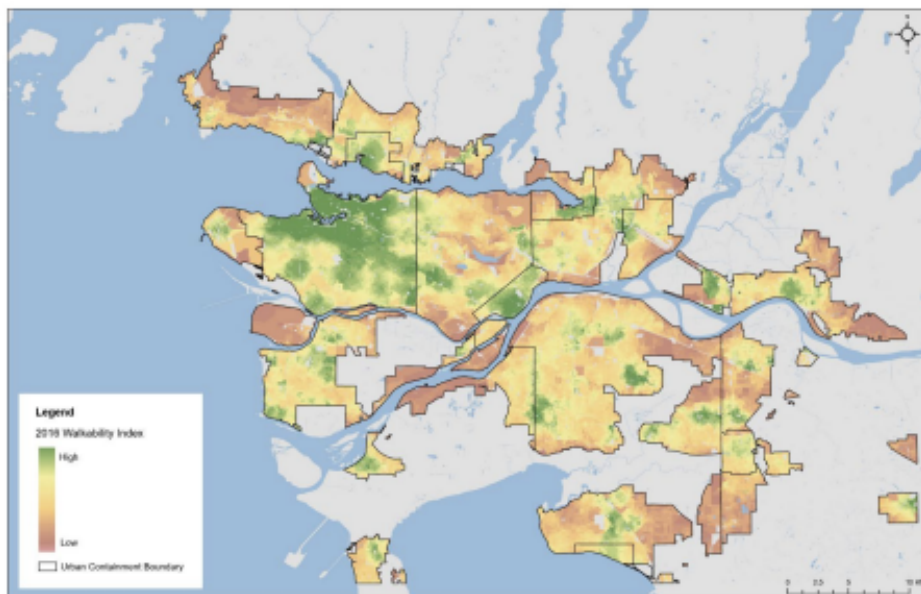


Figure 2. 2016 Walkability Index.





Jen's Board and Committee Appointments for 2024

Below are the boards and committees that I serve on in my role as Electoral Area A Director. Feel free to reach out to me if you would like to learn more.

- Metro Vancouver Regional District (MVRD) Board of Directors
- TransLink Mayors' Council for Regional Transportation
- Chair of the Electoral Area Committee, MVRD
- Climate Action Committee, MVRD
- Mayors' Committee, MVRD
- Flood Resiliency Taskforce, MVRD
- Caucus of Committee Chairs, MVRD
- TransLink Planning & Priorities Committee
- Co-chair of TransLink's Indigenous Relations Working Group
- Board Member for Metro Vancouver Zero Emission Innovation Centre (ZEIC)
- ZEIC Governance Committee
- ZEIC Human Resources Committee Co-chair
- Fraser Valley Regional Library Board of Directors
- Lower Mainland Local Government Association (LMLGA) Second-Vice President
- Municipal Finance Authority of BC Alternate Director

Links & Connections

[Jen McCutcheon's Website](http://www.areaajen.ca)

www.areaajen.ca

[Jen McCutcheon's Facebook](https://www.facebook.com/AreaAJen)

www.facebook.com/AreaAJen

[Metro Vancouver](http://www.metrovancouver.org)

www.metrovancouver.org

[Mayors' Council on Regional Transportation](http://www.translink.ca)

www.translink.ca